

WE **PAINT**
WITH **LIGHT**

AUTHORISED
APPLICATOR
BUSINESS PROPOSAL



/LumiLorIndia



/LumiLorIndia



www.LumiLor.co.in



WHAT IS **LUMILOR**

LumiLor is a Light Emitting Coating (LEC) system which allows anything coated with it to illuminate. Electroluminescence simply means that an object is capable of emitting light when an electrical current is applied.



WORLD'S FIRST LIGHT EMITTING COATING

FOUR UNIQUE LAYER COATING SYSTEM

BACKPLANE | **DIELECTRIC** | **LUMICOLOR** | **CONDUCTIVE CLEAR**

LumiLor is available in **Eight native colors**, these are colors you see when LumiLor is lit.



WHITE



BLUE



ORANGE



AQUA



GREEN



YELLOW



PINK



VIOLET



BASIC EXPLANATION OF THE LUMILOR

STACK DIAGRAM

LIGHT EMITTING COATING

ENCAPSULATING AUTOMOTIVE CLEAR COAT

In the last step, the
Conductive Top Coat is
topped off with
**Encapsulating
Automotive Clear Coat**.

CONDUCTIVE TOP COAT

The **conductive Top Coat**
layer is the final conductive
element- the most charged
allows Lumilor to emit light.

BUS BAR

Bus Bar Application: The next application is the
Bus Bar. The Bus Bar is the conductive layer of
the Back Plane Material that provides a zero
resistance power for better current distribution to
the conductive top coat.

BACK PLANE MATERIAL

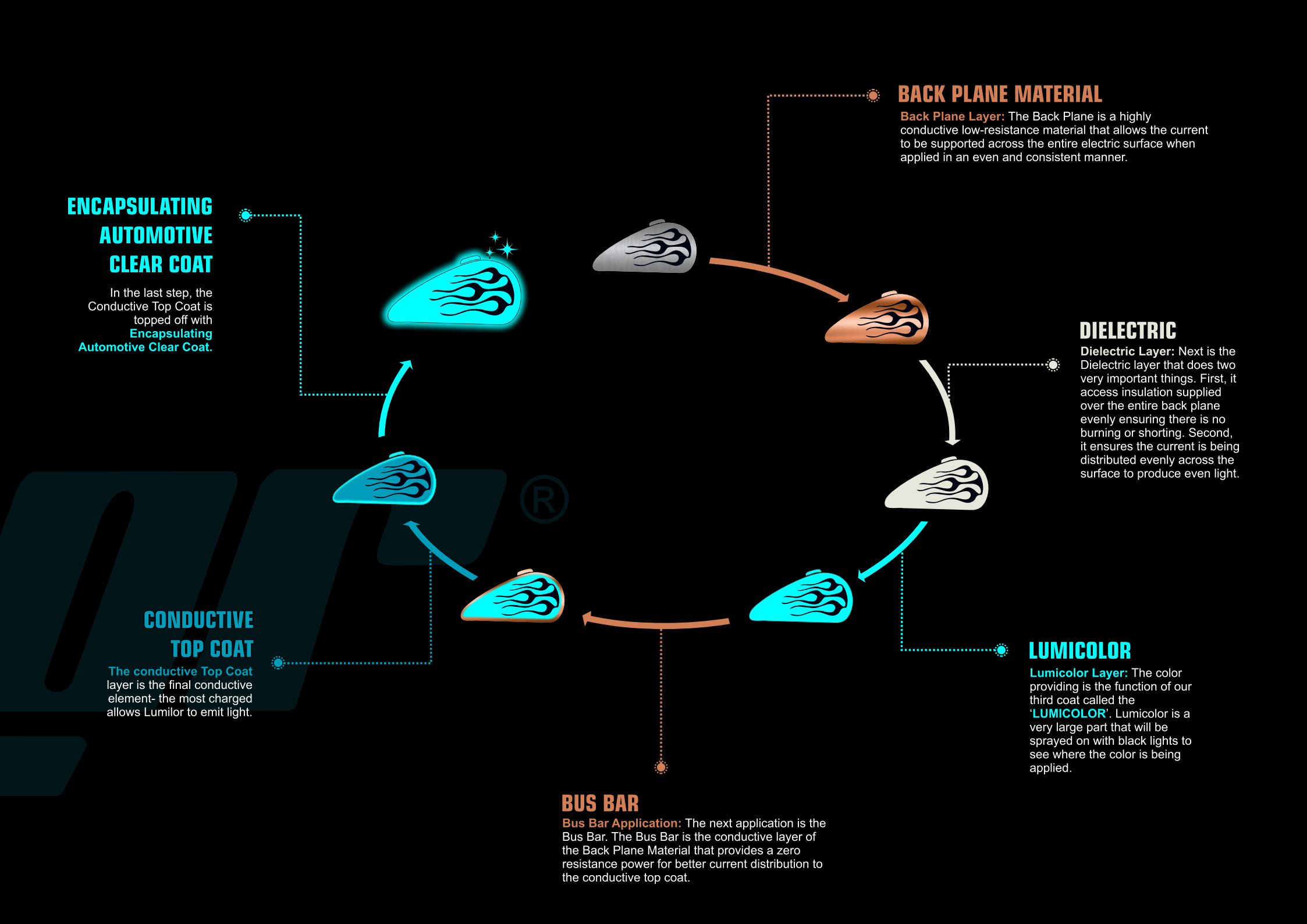
Back Plane Layer: The Back Plane is a highly
conductive low-resistance material that allows the current
to be supported across the entire electric surface when
applied in an even and consistent manner.

DIELECTRIC

Dielectric Layer: Next is the
Dielectric layer that does two
very important things. First, it
access insulation supplied
over the entire back plane
evenly ensuring there is no
burning or shorting. Second,
it ensures the current is being
distributed evenly across the
surface to produce even light.

LUMICOLOR

Lumicolor Layer: The color
providing is the function of our
third coat called the
'LUMICOLOR'. Lumicolor is a
very large part that will be
sprayed on with black lights to
see where the color is being
applied.





**BE AN
APPLICATOR**

START PAINTING LIGHT WITH US

LIGHT EMITTING COATING

Should be a **Professional Automotive Painter** to become a **LumiLor Authorised Applicator**.

Purchasing a **LumiLor Starter Kit** is the easiest and best way for you to **Become a LumiLor Applicator**



A **LumiLor Starter Kit** includes all the basic components needed to get started:

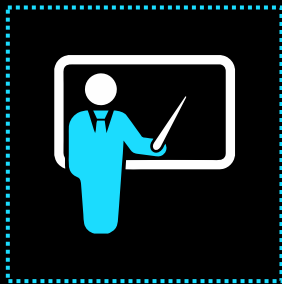
- ⚡ A 4oz LumiLor Bundle which includes all four LumiLor components.
- ⚡ Sample shapes for you to use in your first application
- ⚡ Electronics needed to light up your sample shapes.

BE AN **APPLICATOR**

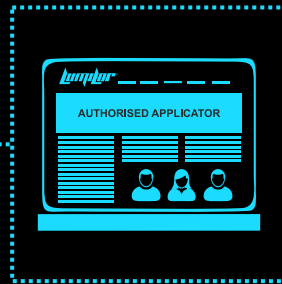


COST : **\$ 2,100**

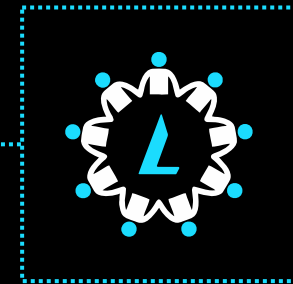
PERKS OF BEING AN AUTHORISED APPLICATOR



PROFESSIONAL TRAINING
FOR **1 INDIVIDUAL**.



APPLICATOR WILL BE **LISTED**
ON THE **OFFICIAL WEBSITE**.



BECOMES THE PART OF
LUMILOR COMMUNITY



TRAINING PROGRAMME

LumiLor experts will conduct a thorough training programme providing you the basics of **LumiLor** through various theories and their practical application.

The **7-DAY TRAINING** includes detailed sessions on **LumiLor** and its working.

THE LUMILOR TRAINING JOURNEY TAKES YOU THROUGH

7 DAYS TRAINING PROGRAMME

DAY : 1

**SURFACE PREP-UP AND
INTRODUCTION** OF VARIOUS
MATERIALS & APPARATUS

DAY : 2

**LUMILOR THEORY &
PRACTICAL APPLICATION**

DAY : 3

**BACKPLANE MATERIAL &
DIELECTRIC COATING
APPLICATION**
(2ND – 3RD LAYER)

DAY : 4

FINAL LAYERS

DAY : 5

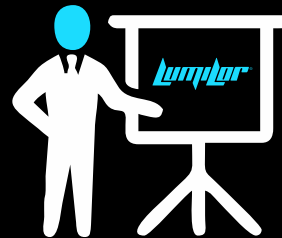
**DESIGN PLANNING &
STARTING INDIVIDUAL
PROJECTS**

DAY : 6

**CORE FOCUS ON
PERFORMING INDIVIDUAL
PROJECTS**

DAY : 7

**TOP COATS, CANDY,
PEARL, BLACKOUT, FINAL
FINISHING AND
POLISHING**



**EVALUATION OF
THE TRAINING.**

After successfully clearing the examination candidates will be **Awarded** with the **Certificate** of “**Authorised LumiLor Applicator**”

DISCLAIMER

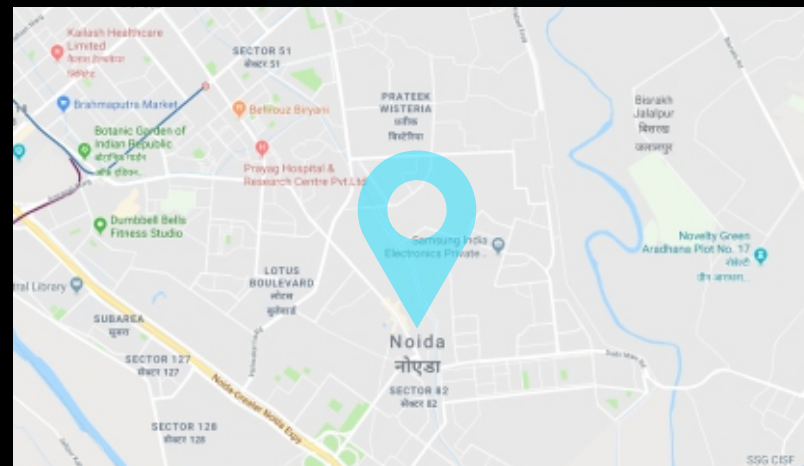
MATERIALS USED DURING TRAINING WILL BE CHARGED SEPARATELY.

TRAINING LOCATION



LUMILOR INDIA

DEVILS GARAGE, #14-15, BLOCK B, SECTOR - 1, NOIDA, UTTAR PRADESH, INDIA





KNOW YOUR TRAINER

ALFRED JOSE (FREDDY)

LIGHT EMITTING COATING

ALFRED JOSE

TRAINING HEAD, LUMILOR

Hails from Kerala and can speak in multiple languages viz Hindi, English, Malayalam & Tamil.

He is a professional Airbrush Artist & also a Mechanical Engineer with immense knowledge in the field of Robotics & Electronics.

Has worked with Royal Enfield & Harley Davidson.

He loves customising automobiles & has a significant presence in the custom paint industry.

Apart from his professional life, he has a passion to ride motorcycles.



POPULAR LUMILOR APPLICATORS **ACROSS THE GLOBE**



H2O GRAPHICS BY DESIGN
OHIO, USA



MAD CARBON FIBER
RUSSIA



LIGHT DESIGN STUDIO
MEXICO



RATTLE SNAKE
JAPAN



HIDRO IMPRESSION
SPAIN



CUSTOM DIGITAL
AUSTRALIA



EXTREME PAINT CONCEPT
ROMANIA



DEMON PAINT
GERMANY



SPRAY LABS LONDON
ENGLAND

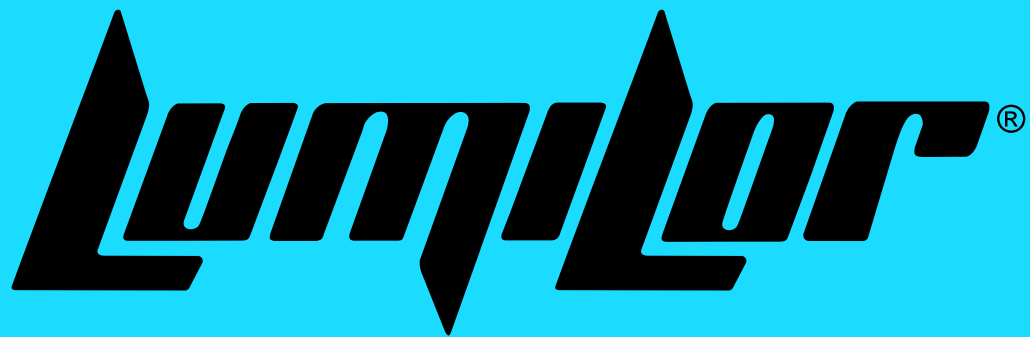


LUMILOR BRASIL
BRAZIL



BE A PROFESSIONAL
LUMILOR
APPLICATOR
NOW!!





WE PAINT
WITH LIGHT



+91 99 5360 3779 / +91 93 5494 3303



/LumiLorIndia



@LumiLorIndia



www.LumiLor.co.in